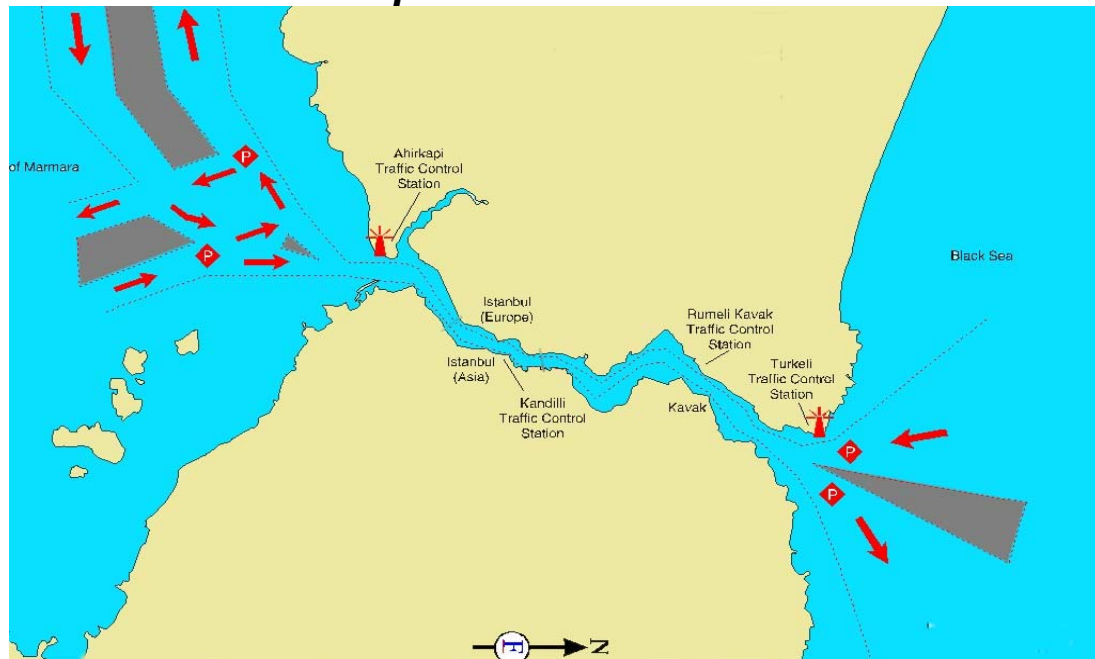


## Republic of Mauritius



### **Background**

Discovered by *the itish*.

Independence was attained in **1968**.

Mauritius was subsequently held by the **Dutch, French, and Breocracy**  
Regular free elections and Positive human rights record.

The Country has attracted considerable **foreign investment** and has earned one of Africa's **highest per capita incomes**.

**Location** Southern Africa, Island in the Indian Ocean, east of Madagascar

### **AREA**

total: 2,040 km<sup>2</sup>

land: 2,030 km<sup>2</sup>

water: 10 km<sup>2</sup>

**Coastline** 177 KM

**Climate** tropical, modified by southeast trade winds; warm, dry winter hot, wet, humid summer.

**Terrain** small coastal plain rising to discontinuous mountains encircling central plateau

**Environment - current issues** water pollution, degradation of coral reefs

**Geography – note** the main island, from which the country derives its name, is of volcanic origin and is almost entirely surrounded by coral reefs.

**Population** 1,230,602 (2005)

**Population growth rate** 0.84%

**Ethnic groups:** Indo-Mauritian 68%, Creole 27%, Sino-Mauritian 3%, Franco-Mauritian 2%

**Religions:** Hindu 48%, Roman Catholic 23.6%, other Christian 8.6%, Muslim 16.6%, other 2.5%, unspecified 0.3%, none 0.4%

**Languages:** Creole 80.5%, Bhojpuri 12.1%, French 3.4% (official), other 3.7%, unspecified 0.3% .

**Government type** parliamentary democracy

**Capital:** Port Louis

**Administrative divisions** 9 districts and 3 dependencies\*; Agalega Islands\*, Black River, Cargados Carajos Shoals\*, Flacq, Grand Port, Moka, Pamplemousses, Plaines Wilhems, Port Louis, Riviere du Rempart, Rodrigues\*, Savanne

**Independence:** 12 March 1968 (from UK)

**Legal system** based on French civil law system with elements of English common law in certain areas

**Executive branch** chief of state: President Sir Anerood JUGNAUTH (since 7 October 2003) .

**International organization participation** ACCT, ACP, AfDB, AU, C, FAO, G-77, IAEA, IBRD, ICAO, ICCT, ICFTU, ICRM, IDA, IFAD, IFC, IFRCS, ILO, IMF, IMO, InOC, Interpol, IOC, ISO, ITU, MIGA, NAM, OPCW, PCA, SADC, UN, UNCTAD, UNESCO, UNIDO, UNMIK, UPU, WCL, WCO, WFTU, WHO, WIPO, WMO, WToO, WTO

**Annual Growth 5% to 6%.**

Sugarcane is grown on about **90%** of the cultivated land area and accounts for **25%** of export earnings.

**Purchasing Power Parity** \$15.68 billion

**GDP - real growth rate:** 4.7%

**GDP - per capita:** purchasing power parity - \$12,800

**GDP - composition by sector**

agriculture: 7.6%

industry: 30%

services: 62.4%

**Investment (gross fixed)** 22.5% of GDP

**Inflation rate (consumer prices)** 4.5%

**Labor force** 560,000

**Unemployment rate** 10.8%

**Budget revenues:** \$1.231 billion

expenditures: \$1.582 billion, including capital expenditures of NA

**Public debt:** 29.2% of GDP

**Agriculture - products:** sugarcane, tea, corn, potatoes, bananas, pulses; cattle,; fish

**Industries:** food processing (largely sugar milling), textiles, clothing; chemicals, metal products, transport equipment, nonelectrical machinery; tourism

**Industrial production growth rate** 8%

**Current account balance** \$284.1 million (2004 est.)

**Exports** \$2.012 billion f.o.b.

**Exports – commodities** clothing and textiles, sugar, cut flowers,

**Exports - partners** UK 30.6%, France 22.7%, US 13.7%

**Imports** \$2.245 billion f.o.b.

**Imports – commodities** manufactured goods, capital equipment, foodstuffs, petroleum products, chemicals

**Currency** Mauritian rupee (MUR)

**Exchange rates** Mauritian rupees per US dollar - 27.499

**Highways** total: 2,000 km

paved: 1,960 km (including 60 km of expressways) - unpaved: 40 km .

**Ports and harbors** Port Louis

**Merchant marine** total: 8 ships 22,946 GRT/27,102 DWT  
by type: bulk carrier 4, passenger/cargo 2, refrigerated cargo 2 foreign-owned:  
6 (India 4, Switzerland 2)  
**Airports** 6